



**March 2005 Monthly Newsletter**

**Welcome!**

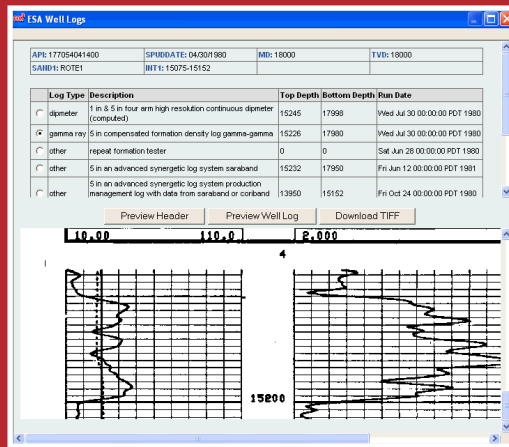
Welcome to ESA's monthly Newsletter. Our objective is to highlight – within a single page – features or updates in GOM<sup>3</sup> that will improve your use of the system. We actively solicit your input on the Newsletter. If there is an issue you think we should address, please contact us by email or phone (or, of course, visit us in Long Beach).

**Well Log Images in GOM<sup>3</sup>**

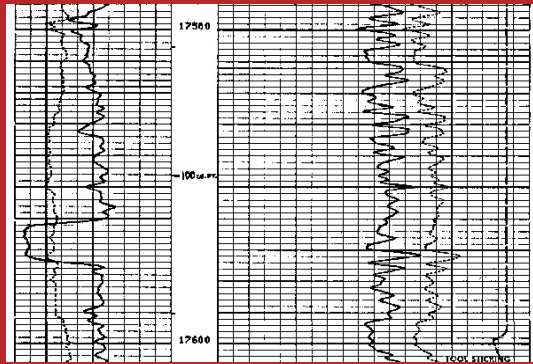
Well Log images released by MMS are now available from all three GOM<sup>3</sup> components: ArcView, Online and Direct Report Access (DRA). After selecting the well, you may preview the log header and image on the screen. If it is the log you need, download the TIFF image.

To access logs in GOM<sup>3</sup>-ArcView, load Wells or Directionals from the GOM<sup>3</sup> drop-down menu (choose Map Layers, then Wells). Click once on either the Wells or Directionals layer to activate it in the Table of Contents. Zoom into the well of interest and select the Hotlink Tool from the GOM<sup>3</sup> Toolbar; then click on the well. The Hotlink dialog box will open. Select the last choice on the left, Well Logs. Click on View Logs in the right and click OK.

The ESA Well Log dialog box will open. It will show you the depths of completion intervals for that well at the top and then a table listing the well logs available, reported depths and run dates. Choose a well log and click either the Preview Header or Preview Well Log buttons to examine it. If it is the



**Above: ESA's Well Log dialog box. Select the type of Well Log you would like to view, preview it and download the TIFF.**



**Above: Section of the Gamma Ray Well Log for API Number: 177054041400**

log you want, download the TIFF file and use it in your favorite well log image viewing software. You can also view the new Help movie “How to View and Download Well Log Images.”

To access Well Logs from GOM<sup>3</sup>-Online, connect from ESA's GOM<sup>3</sup> Desktop icon, or through the Client Proprietary Services link on our web site ([www.earthsci.com](http://www.earthsci.com)). Zoom into the area of the well (they become visible at 1:75,000). Click the Hotlink / Identify Tool and click on the well or directional. In the Legend / Table of Contents box on the left, Well Log Images will appear at the top with the number of available logs in parentheses. Clicking on that link brings you to the ESA Well Log dialog box described above.

From GOM<sup>3</sup>-DRA, after clicking on the Wells tab, select the well of interest and click on the Well Logs button in the lower right. This will open the ESA Well Log dialog box.

**Schedule**

In December, we loaded 177,000 well log images, covering the Louisiana shelf as of May 2004. In April, we will complete the remaining ~ 50,000 well log images for the Texas shelf and deep water (as of May 2004). In May and June, we will make the collection current throughout the Gulf and thereafter add each new month's logs as they are released by MMS.

**Earth Science Associates (562) 437-7373**

