



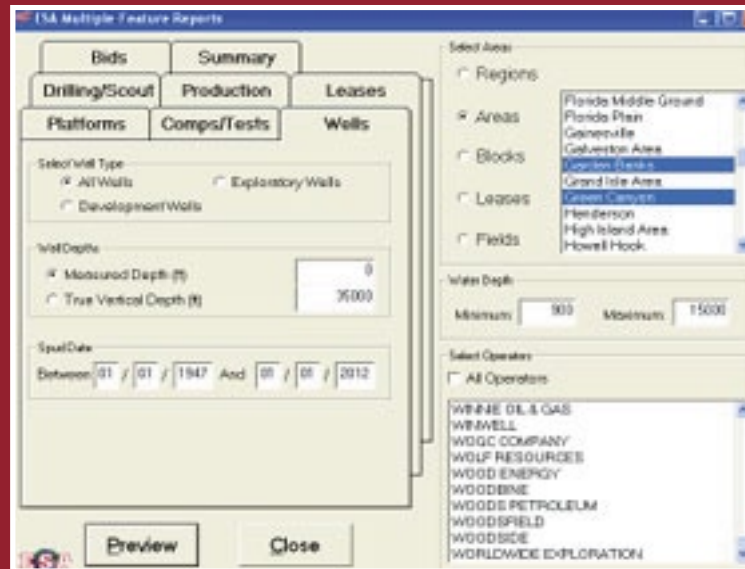
March 2007 Monthly Newsletter

Functionality Update

While the data in *GOM³* is updated every month (and key variables weekly in *GOM³-Online* and *What's New*), each quarter we update system functionality. These changes respond to suggestions made by users, fixing problems we've identified and upgrading or introducing new capabilities into the system. This quarter's functionality update concentrates on our Direct Report Access (DRA) component.

DRA is split in two. The front-end launched by selecting DRA under the *GOM³* desktop icon allows users to get immediate data on any single lease, field, well, completion and platform, displayed in a familiar format. The Notes/Documents linking capability has been added for all data.

For more detailed reports covering areas or complex queries, push the "Multiple Feature Report" button. The interface for Multiple Feature Reports has been upgraded to support easier imposition of selection criteria (e.g., all wells drilled in 2007 in water depths > 1,000 ft.). New Multiple Feature Reports have been added, improving output on completions, tests, APDs, Lease Operating Rights and ESA's Discovery and Prospect coverage.



GIS/Support Conference

Last year, when we decided to start holding *GOM³* conferences, we made a split. Our first conference in October 2006 was aimed at end-users. This spring's conference is intended for GIS and IT specialists who

support our end-users.

By focusing a meeting on "back-shop" issues, we hoped that we could solicit focused advice on important technical issues. These include improving our installation/updates; the role SDE and geodatabases should play in future development; streamlining integration between *GOM³*, data sets from our 3rd Party Partners and other data users need; how we can improve our user support and training. We also want to discuss how to facilitate the increasingly specialized lease ownership/operatorship mapping clients ask about in support calls and in our training classes.

In the June and September updates, we will introduce new tools to display images of 2-D seismic data in the 3-D GIS component of *GOM³* and a wizard to directly connect to SEG-Y. Input at this meeting will help us introduce these powerful new capabilities in the most efficient manner possible.

GOM³ Calendar

AAPG Annual Convention
April 1 - April 3, 2007
Long Beach, CA

First GIS-Support Conference:
April 19, 2007
@ Anadarko

