



February Monthly Newsletter

New Charts in GOM³/GOMsmart

A new and very much improved generation of charts launches today in both *GOMsmart* and *GOM³*. We replaced all of the production, development and resource charts in *GOMsmart*

with versions that provide much more information, are more visually clear, and execute faster, both to the screen and for printing. The same new charts appear (over the web) in *GOM³*.

The value of information displayed in the charts increased three ways. 1) **Data in subtitles.** For

instance, a well production chart lists the field, API number, well name, the ID of the complex where the well is located, the production dates covered and cumulative oil, gas and water. 2) **Secondary charts.** Again, using well production as an example, a separate horizontal bar graph above the production chart shows the duration of production by each completion in the well. In the field production chart, the secondary graph shows total production divided by sands. Added to platform production charts is a graph showing the volume produced by each field tied to that platform. 3) **Embedded tables.** In conjunction with the secondary charts, tables of associated numerical data are displayed at the bottom of the chart. On a well production chart, this is a table on the well's completions.

Within *GOMsmart*, charts (along with reports, data downloads and well logs) are accessed by pressing the Single-Feature Reports/Charts button at the

bottom of the main *GOMsmart* window. Within *GOMsmart*'s map, to create a chart on a feature, grab the Hot Link Tool (red lightning bolt) and click on the feature. A dialog box opens for you to

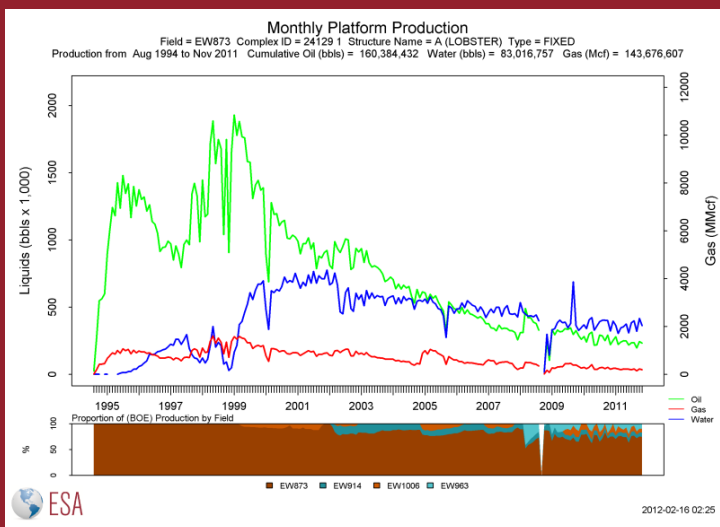
set the feature of interest (i.e., you may have clicked on a point that is covered by a well, field and lease). Immediately below that choice is the button for reports and charts. In *GOM³*, the same Hot Link Tool accesses a similar dialog box through which charts are created. Some narrow-use charts within *GOM³* will be introduced later when the newly-

released Atlas data is updated.

In addition to combining charts and increasing information content, for production charts we added more charting options. Linear and log y-axes are still available, but there are now options to plot the x-axis as either cumulative production or months-on as well as the traditional monthly time axis. For the cumulative production graphs, we added a secondary x-axis in time.

This is a first step. Please send us comments on the new charts for refinement as well as suggestions for new charts and other ways of examining the data at contactesa@earthsci.com or call.

Earth Science Associates (562) 428-3181



GOM³ Calendar

**NAPE - Houston
February 22-24, 2012**

**Central Lease Sale 216/222
June 20, 2012**

4300 Long Beach Boulevard, Suite 310, Long Beach, CA 90807

www.earthsci.com



ESA | earth science
associates