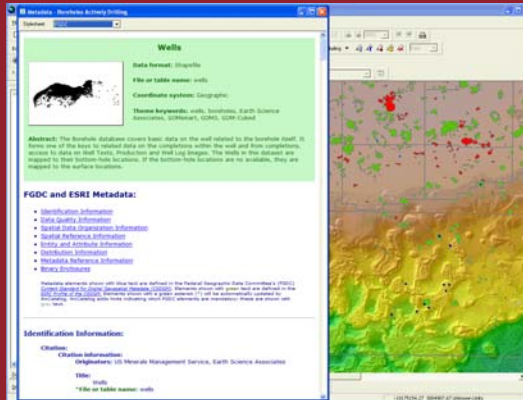




## January 2010 Monthly Newsletter Metadata

Metadata is information about data. It consists of two parts: properties and documentation. Properties, such as the spatial extent of features and feature attributes, are automatically derived from the dataset. Documentation is descriptive information about the dataset, such as the source of the data, the accuracy of the data, and the creation or modification date of the data. Metadata is becoming increasingly important to properly maintain the endless data collected by organizations. By creating metadata and sharing it, information about the data becomes readily available to anyone seeking it, thus increasing its value.

There are a number of standards which make sharing metadata across states and countries more viable. In the U.S. the *Federal Geographic Data Committee* (FGDC) defines spatial data metadata standards while the *International Organization for Standardization* (ISO) maintains criteria for international metadata standards. The metadata created by Earth Science Associates is now stored in an ESRI-defined XML format. This format currently combines FGDC-, ISO-, and ESRI-defined XML elements in the same metadata document.



GOM<sup>3</sup> provides easily accessible metadata before adding data into ArcGIS. When loading map layers or tables, a metadata button is available on each dialog to view the metadata of the selected dataset. The window allows you to view the metadata in a variety of styles, including five FGDC styles and two

ISO styles. This is a big improvement over the previous metadata which was in only one format (FGDC Classic). The metadata can also be accessed after it is loading into ArcGIS, simply by right-clicking on its name in the table-of-contents and choosing Data→View Metadata.

Using ESRI's XML metadata makes it easy for the user to locate the information they need. Many companies have created internal programs to search for data based on metadata keywords, though ESRI's ArcCatalog program will also perform the search. In fact, ArcCatalog can search for data based on date and geographic region as well. Simply right-click on a folder or drive in ArcCatalog and choose Search to be presented with the many ways of searching for data on your network. Metadata is becoming ever more valuable as a means of managing large amounts of data and the new metadata format in GOM<sup>3</sup> will integrate our data that much more easily into your systems.

Earth Science Associates (562) 428-3181

### GOM<sup>3</sup> Calendar

Central Lease Sale  
March 17, 2010

User & GIS-Support Conference  
October 21, 2010

4300 Long Beach Boulevard Suite 310 Long Beach, CA 90807  
www.earthsci.com

