

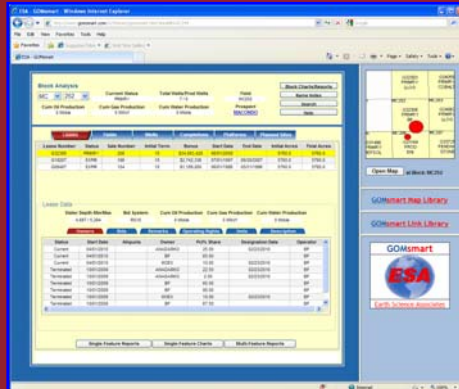
**GOM<sup>3</sup>**

July 2010 Monthly Newsletter

**GOM<sup>3</sup>**  
smart

## Accessing GOMsmart Away from Your Desk

Since we introduced our web-based service, GOMsmart, last year, we have gained nearly 1,000 users. For some users, the attraction is simple and quick access to all the basic tabular data that is available through the ArcGIS interface of GOM<sup>3</sup>; for others, it offers a simpler mapping system that gives answers without resorting to the GIS functionality available in GOM<sup>3</sup> (and use of ArcGIS licenses).



It is also possible, however, to access GOMsmart from an internet browser anywhere in the world 24 hours a day, 7 days a week.

When you're away from your office it's easy to access GOMsmart one of two ways. First, you can go directly to the GOMsmart website at [www.gomsmart.com](http://www.gomsmart.com) and click the red "Login" link in the

upper right corner. Second, use this link <http://www.gomsmart.com/GOMsmart/login.aspx> to navigate directly to the login page.

In response to user input, we have expanded the mapping capability of GOMsmart, built an easy to use data export tool, allowed users to access 3<sup>rd</sup> Party Partner data and provided the ability to launch GOM<sup>3</sup> directly from within GOMsmart. There is also a real time ticker running at the bottom of the screen that reports the most recent updates by variable and indicates when an update process is executing (and certain data may, for a few minutes, be unavailable).

Once at the login page, you can manually login by using your company email address as the User Name (no email except your company email will work). ESA assigns a unique password for each of its client-companies. These are available either from your system administrator responsible for GOM<sup>3</sup> or from Earth Science Associates. As always you may contact us by phone at (562) 428-3181 or email us at [contactesa@earthsci.com](mailto:contactesa@earthsci.com) to receive your company's password for use with GOMsmart while away from your office.

GOMsmart is accessible from your desktop at work by simply clicking on the ESA Desktop icon, choosing the GOMsmart option and clicking Launch. The system automatically picks up your company's password and opens the GOMsmart entry page where you choose the block of interest to open on.

**Earth Science Associates (562) 428-3181**

### Call for Papers

ESA's Annual User Conferences will be held 10/21 at Hess' office in Houston. The AM session will be for end users and the PM for GIS specialists/IT support personnel. We invite 1-2 user papers for each session (approx. 20 minutes). Please contact Tony Dupont ([tony@earthsci.com](mailto:tony@earthsci.com)) if you would like to give a talk.

4300 Long Beach Boulevard Suite 310 Long Beach, CA 90807



[www.earthsci.com](http://www.earthsci.com)