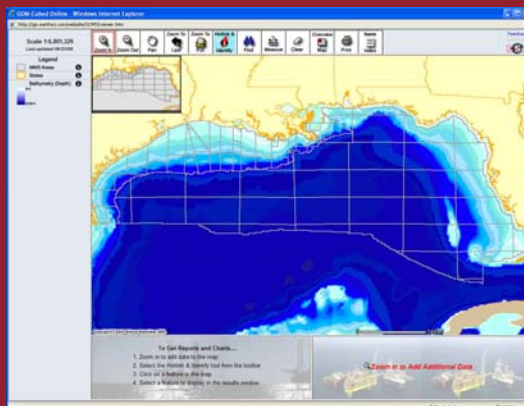


GOM³**GOM³ Quarterly Newsletter**
GOM³ Online: Quick Answers

Most GOM³ users fall into three large camps: those who usually use the principal component of the system, based on ArcGIS; those who mainly rely on our Direct Report Access (DRA) component and those who can't get enough and frequently use both. While there has always been a hardy band who hit our GOM³ Online component over the web, this resource remains underutilized.

GOM³ Online is a web-based subset of the data and functionality available in the desktop ArcGIS-based GOM³ system that runs within Internet Explorer. You can access it two ways. From the GOM³ Desktop icon simply choose GOM³ Online from the choices on the left. The second way, if you're away from your office computer, is to simply browse to ESA's web site, www.earthsci.com. On the left of the home page, click the GOM³ Online Login button. Either path requires a password, which has been assigned to your company. If you don't know it, call us.

After logging in, GOM³ Online loads in your browser with a map showing the entire GOM. The tools perform the same functions as in ArcGIS. As you zoom into an area, more variables are mapped. As in GOM³ for ArcGIS, you get details on a feature by clicking it with the ESA Hot Link Tool (the red lightning bolt).



When you hit a point on the screen with it, all features covering that point are posted in a frame on the left (you may have hit a well that falls within a field and a lease). Choose the feature of interest, for instance, a well. Automatically, the basic data on the well appears in a small window at the bottom right of the screen; the well's production automatically appears on a graph on the lower left. Buttons in these frames access all charts on the features and all reports, including those that directly hit MMS servers. Well logs are also just a click away.

The GOM³ Online map can be panned and zoomed to any extent of interest and printed. You cannot change feature legends, add local data, go into 3-D or perform GIS analysis within this component of GOM³. For those, you'll need to fire up the ArcGIS-based part of GOM³. However, for quick access to charts, reports, logs and making simple maps, it can't be beat. You can use it from anywhere in the world, 24/7 and does not require that you have ArcGIS installed or be on your company's network.

If you have any questions on access to GOM³ Online, or need your company's password, call.

Western Sale 207
August 20, 2008

GOM³ Calendar

2008 End-User Conference
October 2008

