



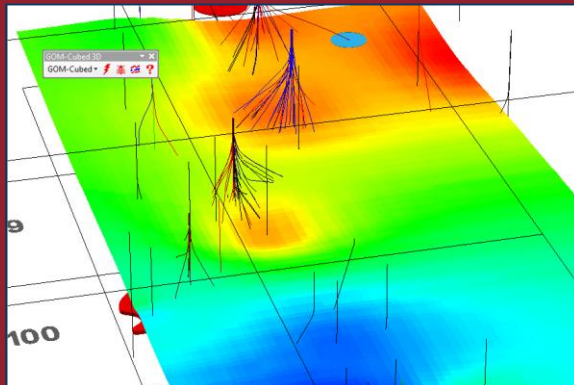
May 2011 Monthly Newsletter

GOM³ Add-Ins for ArcGIS 10.0

With the release of Service Pack 2 for ArcGIS 10 (and the elimination of the bug causing instability in the ESRI Add-In functionality), the GOM³ Add-In is now available for everyone using ArcGIS 10. At the moment, the differences between the toolbars for the previous installation and the Add-In version appear minimal, though the advantages behind-the-scenes will quickly become apparent. It is the first of the new features of ArcGIS 10 to be incorporated into GOM³.

The biggest advantage Add-Ins have over the previous toolbar is installation. The ability to upgrade the functionality of the toolbars in both ArcMap and ArcScene almost continuously. This is because Add-Ins allow toolbars to be loaded and utilized without registry entries. In system environments with controlled desktops, installation packages and strict processes to verify software, this feature increases accessibility and reduces install complexity of the toolbar. It also means that fixes and enhancements can be added to your desktop almost instantly.

GOM³ Add-Ins are delivered monthly with the data updates. Locations to search for new Add-Ins are saved in ArcMap and ArcScene. When new ones are found, the updated Add-Ins are copied to your



computer into the appropriate location and they are ready to use in your next ArcMap or ArcScene session. GOM³ will become increasingly useful as new toolbar additions become available. This, combined with the instant changes to GOMsmart, allows us to be even more responsive to user input.

The upgrade from ArcGIS 9.3 or 9.3.1 to ArcGIS 10 is a large one, but we are encouraging everyone to make the switch. There are many advantages beyond the Add-Ins, as detailed in last month's [newsletter](#), but the savings in maintenance costs associated with supporting GOM³ alone is important. Development of the existing toolbar is coming to an end—the release of version 5.8 in late June or July will mark the last new version of the toolbars for ArcGIS 9.3 and 9.3.1. No changes will be made to force an upgrade to ArcGIS 10, but new functionality with the Add-Ins toolbar is already being developed. For instance, the May update features the addition of new tabs to access tabular data in the Hydrocarbon Accumulations, Wells and Leases dialogs. These new features will not appear in the old installations. As always, input about these ongoing changes is appreciated.

Earth Science Associates (562) 428-3181

GOM³ Calendar

**Fundamentals of ArcGIS
Petroleum Users
June 6-7, 2011
TeachmeGIS - Houston**

**Introduction to GOM³
June 10, 2011
TeachmeGIS - Houston**

