



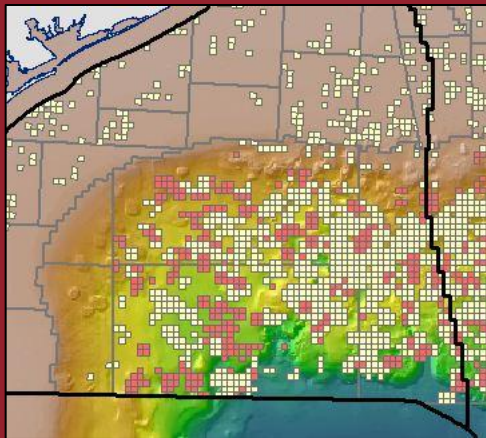
November 2011 Monthly Newsletter

Lease Suspensions due to Moratorium

Due to the moratorium on deep water drilling imposed after Macondo, over 1,200 leases were granted a suspension of operations for up to one year. These suspensions required that leases that were scheduled to expire by the end of 2015 not have produced by May 15, 2011 and be in water depths less than 500 feet. While the BOEM has begun the process of updating the Expected Expiration Dates for these leases, it has not been a rapid change.

The lease data in GOM³ has been modified with a new column to calculate new Expected Expiration Dates while awaiting the updates to the standard BOEM lease database. This new 'ESA Expected Expiration Date' column stores all of the Expected Expiration Dates with new values where appropriate. These new values have been calculated by reading the suspension dates out of both the Serial Remarks database and the scanned SOO documents released by the BOEM (both accessible through the GOM³ ArcGIS hotlink tool and GOMsmart).

In ArcMap, these columns can be used to re-legend or label the leases. When loading new leases through the GOM³ toolbar,



the Expected Expiration Date legend option will color the leases using the ESA Expected Expiration Date. A quick map of these modified leases can be downloaded [here](#).

In GOMsmart, there are a number of changes. First, in the main interface under the Leases tab, there is a new column to list the Expected Expiration Date.

The ESA Expected Exp. Date is shown but if you hover the mouse over the date, the BOEM date will be displayed. A current example of the difference is in the first block alphabetically, AC001. The date displayed is 9/30/2015, but the BOEM date is 9/30/2014. In GOMsmart's Multi-Feature Reports, the Lease History and Expected Lease Expiration reports have been modified to show both the ESA and BOEM versions of these dates. The BOEM dates are available through the Add Column button.

NOTE: In ArcMap, the official set of blocks available for Sale 218 is now available. These blocks are served over the web through the GOM³ What's New service and can be accessed with the red exclamation point on the GOM³ toolbar. The What's New dialog is also the first location to check for the Blocks that receive bids on December 14.

Earth Science Associates (562) 428-3181

GOM³ Calendar

Western Lease Sale 218
December 14, 2011

NAPE - Houston
February 22-24, 2012



