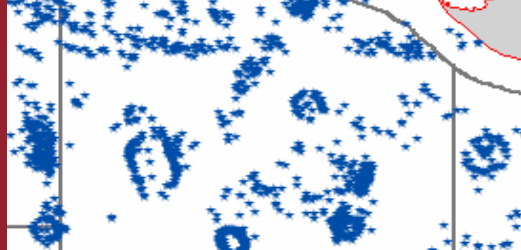


GOM³

October 2007 Monthly Newsletter GOM³ & the Offshore Oil Scout

In our September 2007 update, we made an addition to our 3rd Party Partner program that had been recommended by clients over several years – the Offshore Oil Scouts Association (OOSA). OOSA is best known for providing the latest and most comprehensive weekly intelligence on the status of all drilling and recently completed wells in its Scout Tickets, a reference checked daily by hundreds of GOM³ users.



have maintained their historical files in accessible condition. To assist, members needing complete copies of the historical file may contact the OOSA office by phone or email for a new copy (see below). Going forward, OOSA weekly update files will include dates, to make processing within GOM³ easier for users.

The Scout data includes weekly updates on drilling depth, drilling and casing programs (including mud weights), tests performed on the wells (including the results of leak-off tests), logging runs and completions. Because the Scouts have collected this data for decades, in addition to the weekly updates, their historical data file contains over 60,000 wells going back to the beginning of offshore exploration.

Integration of the OOSA data allows GOM³ users direct access. This includes mapping the top, proposed and actual bottom hole locations of wells in ArcGIS; loading their data into a table (for joining with other data in ArcGIS, or exporting it in .csv format) or to print the Scout Tickets. From the GOM³ Toolbar, pick Map Layers -> 3rd Party Data -> OOSA.

GIS will greatly leverage the value of the historical OOSA data. Because easy mapping and analysis options for this data did not previously exist, many OOSA members may not

The September release completed the first stage of the OOSA data integration – access and basic mapping. In the second phase, ESA will support conversion of OOSA data recorded in measured depth to true vertical depth (TVD). This will allow high precision mapping of pressures, rock competence, production test and drilling program data in TVD; the second phase will be released in December 2007. The final phase will involve displaying OOSA data in the 3-D GIS component of GOM³ (release in 2008).

As with all other 3rd Party Partners, ESA does not distribute OOSA data, but has built links, mapping and analytic capabilities that work only if your company is an OOSA member. If you are Scout members, contact the OOSA office. The technical details of the simple steps to link from GOM³ to your copy of the OOSA data are available from either us or the Scout office. For assistance, contact David Dunbar in our Houston office (david@earthsci.com, 281-910-8869) or Maria Thompson at OOSA (mthompson@oosa.com, 504-831-3571).

Earth Science Associates (562) 428-3181

GOM³ Calendar

**In-house Training @ Devon
December 3 & 4, 2007**

**Public Training
December 5 & 6, 2007**

